

Hydro-split EASYMINI

WISAN-YME 1 S + HQCN-NEE 1 MC A
WISAN-PME 1 S + HQCN-NEE 1 MC

Wall-mounted indoor unit with DHW tank for Hydro-split systems

Can be combined with EDGE EVO 2.0 and EDGE F

ENERGY SAVING



Integration Heating/DHW



Cascade



€-Switch

COMFORT



Hot Cold



DHW



Silent

RELIABILITY



Backup heater (optional)

CONVENIENCE



Weekley Timer



Integrated DHW tank

MANAGEMENT AND CONNECTIVITY



Input ON/OFF



Port Modbus



Control via App



Management CONTROL4 NRG



Clivet Eye monitoring



User interface / thermostat

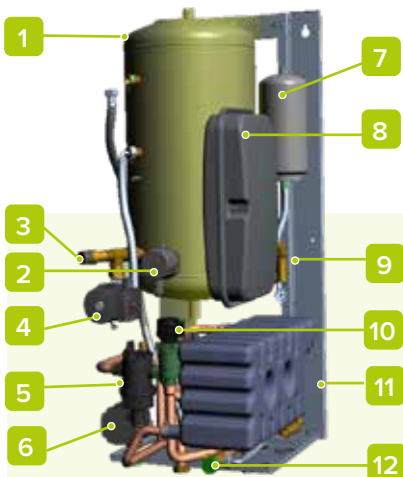


- ✓ 50 l DHW storage tank
- ✓ Complete unit
- ✓ Integrated hydraulic separator
- ✓ Can be combined with EDGE outdoor units
- ✓ Reduced space requirements
- ✓ Easy installation

Versatile to suit every type of system

Hydronic EASYMINI modules are designed to be combined with the EDGE family of packaged heat pumps.

In addition to the DHW tank, they contain a 15-litre buffer tank, magnetic baffle filter, system expansion tank and anti-burn valve as standard.

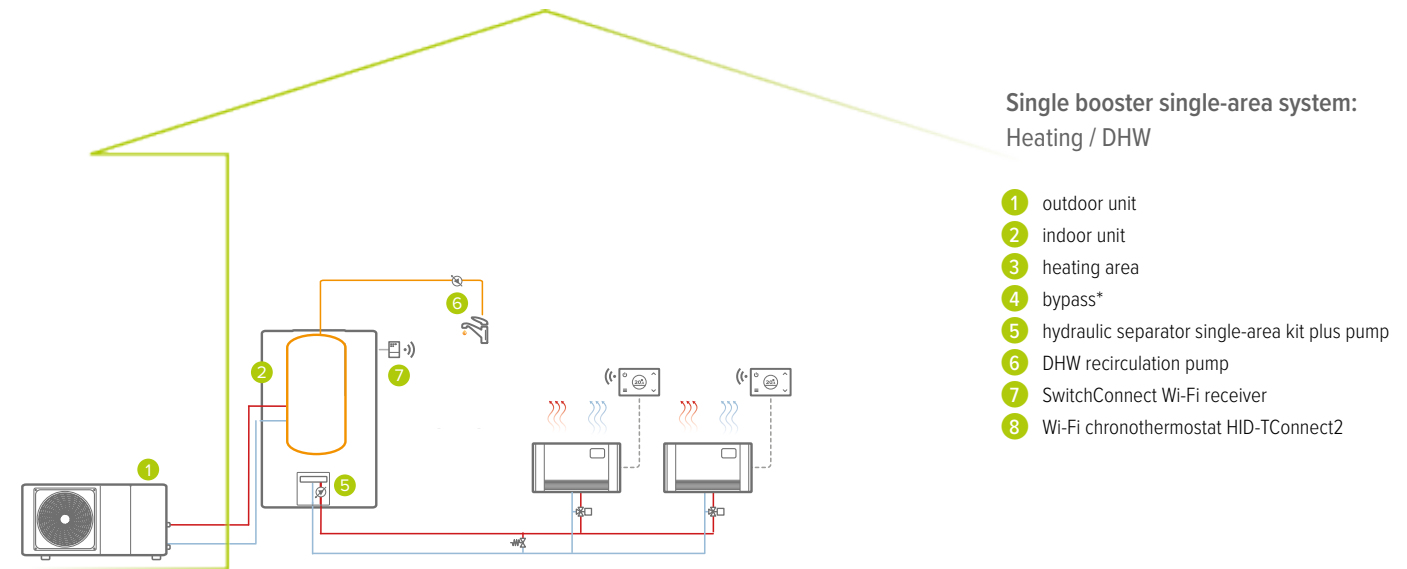
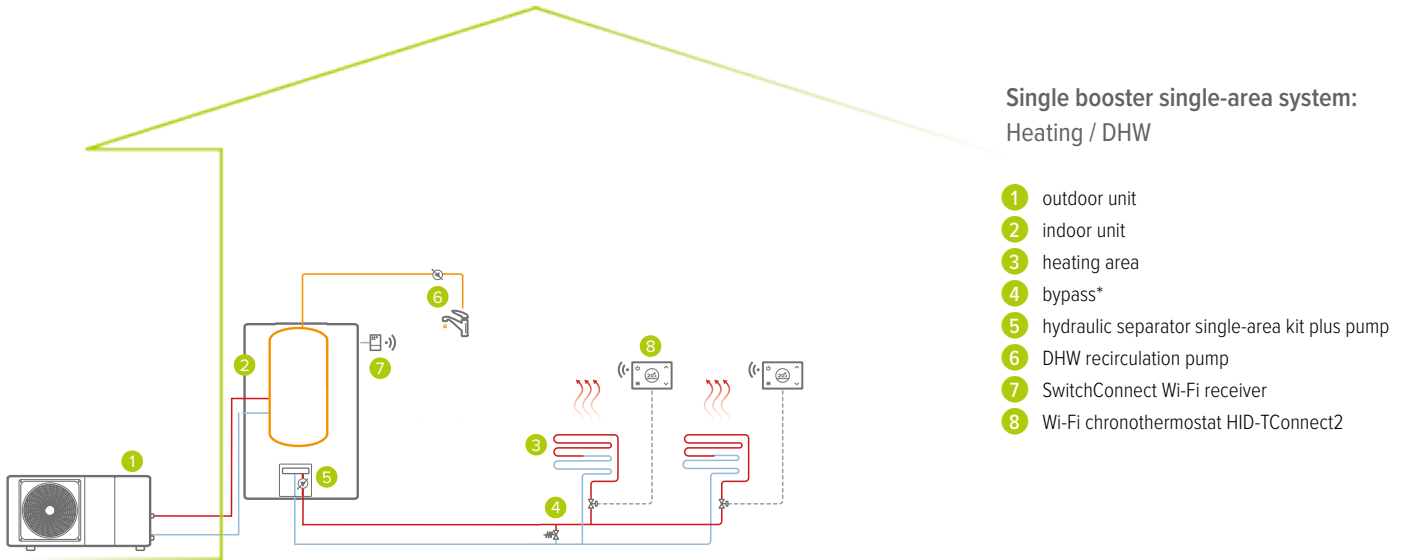


- | | |
|--|--------------------------|
| 1. 50-litre domestic water tank | 7. Health expansion tank |
| 2. Backup electric heater | 8. System expansion tank |
| 3. System pressure relief valve | 9. Health safety valve |
| 4. Domestic water circuit circulator | 10. Inertial tank |
| 5. Magnetic deflector filter+safety valve | 11. 3-way valve for DHW |
| 6. Hydraulic separator with secondary pump | 12. Anti-scalding valve |

configurations

Hybrid version in combination with Clivet FE boiler

system diagrams



technical data - EASYMINI + Edge EVO 2.0

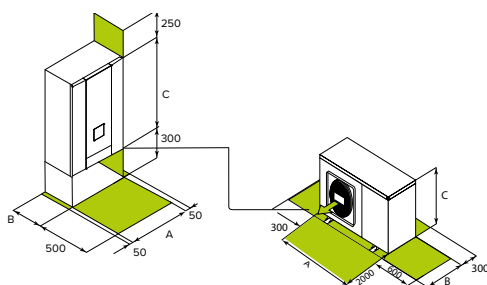
Size - Set				2.1	3.1	4.1	5.1	6.1	7.1	8.1			
Heating	Capacity	Water 35/30°C	Nominal / Maximum	kW	4,20 / 5,33	6,35 / 7,41	8,40 / 9,11	10,0 / 10,3	12,1 / 14,6	14,5 / 15,5	15,9 / 16,8		
	COP	Outdoor air 7°C	Nominal	-	5,10	4,95	5,15	4,95	4,95	4,60	4,50		
	Capacity	Water 35/30°C	Nominal / Maximum	kW	4,70 / 4,99	6,00 / 6,21	7,00 / 7,27	8,00 / 8,31	10,0 / 11,0	12,0 / 12,7	13,1 / 13,9		
	COP	Outdoor air -7°C	Nominal	-	3,10	3,00	3,20	3,05	3,00	2,85	2,70		
Cooling	Capacity	Water 45/40°C	Nominal / Maximum	kW	4,30 / 5,96	6,30 / 7,13	8,10 / 8,98	10,0 / 10,3	12,3 / 14,5	14,1 / 15,7	16,0 / 16,6		
	COP	Outdoor air 7°C	Nominal	-	3,80	3,70	3,85	3,75	3,70	3,60	3,50		
	Capacity	Water 18/23°C	Nominal / Maximum	kW	4,50 / 7,65	6,50 / 7,65	8,30 / 11,1	9,90 / 12,0	12,0 / 15,0	13,5 / 15,3	14,2 / 16,4		
	EER	Outdoor air 35°C	Nominal	-	5,50	4,80	5,05	4,55	3,95	3,61	3,61		
DHW	Capacity	Water 7/12°C	Nominal / Maximum	kW	4,70 / 6,14	7,00 / 7,11	7,45 / 7,94	8,20 / 8,67	11,5 / 11,5	12,4 / 12,4	14,0 / 14,0		
	EER	Outdoor air 35°C	Nominal	-	3,45	3,00	3,35	3,25	2,75	2,50	2,50		
DHW				Net tank capacity	l						50		
Electrical power for meter sizing				kW	2,30	2,70	3,40	3,70	5,50	5,80	6,20		
Seasonal efficiency	Heating	Water 55°C	Energy class	-	A++	A++	A++	A++	A++	A++	A++		
			Annual energy consumption	-	2.749	3.348	4.064	4.541	6.916	6.917	7.213		
			SCOP	-	3,31	3,52	3,37	3,47	3,45	3,47	3,41		
	Medium climate	Heating	Water 35°C	ηs (seasonal output)	%	129	138	131	137	135	135	133	
				Energy class	-	A+++	A+++	A+++	A+++	A+++	A+++	A+++	
				Annual energy consumption	-	2.354	2.849	3.223	3.649	5.156	5.157	6.011	
	Cooling	Water 35°C	SCOP	-	4,85	4,95	5,22	5,20	4,81	4,72	4,62		
			ηs (seasonal output)	%	191	195	205	205	189	186	182		
Size - Indoor unit				TO									
Power supply				Voltage/Frequency/Phases	V/Hz/n°							220-240/50/1	
System expansion tank capacity				l								8	
DHW expansion tank capacity				l								3	
Sound power				Nominal	dB(A)							41	
Sound pressure @1m				Nominal	dB(A)							26	
Size - Outdoor unit													
Power supply				Voltage/Frequency/Phases	V/Hz/n°							220-240/50/1	
Water flow-rate				Water 35/30°C	Nominal	l/s	0,20	0,30	0,40	0,48	0,58	0,69	0,76
Pump available pressure				Outdoor air 7°C	Nominal	kPa	85	84	80	71	60	48	40
Expansion tank capacity				l								4,8	
Minimum system water content				l	30							70	
Sound power				Minimum / Nominal	dB(A)							53 / 55	
Sound pressure @1m				Minimum / Nominal	dB(A)							39 / 41	
Operating range													
Water supply temperature	Heating / DHW	Full electric	Minimum / Maximum	°C							25 / 65		
		Hybrid	Minimum / Maximum	°C							25 / 75		
Operating range	Cooling	-	Minimum / Maximum	°C							5 / 25		
		-	Minimum / Maximum	°C							-25 / 35		
(Outdoor air)	Cooling	-	Minimum / Maximum	°C							-25 / 43		
		-	Minimum / Maximum	°C							-5 / 43		

dimensions and connections

Size				2.1	3.1	4.1	5.1	6.1	7.1	8.1
	Indoor unit	AxCxB	mm	450 x 1100 x 550						
	Outdoor unit	AxCxB	mm	1.295x717x400			1.385x864x445			
Operating weight	Indoor unit		kg	140						
	Outdoor unit		kg	86	105				129	
Refrigerant charge			type / GWP	R-32 / 675						
			kg	1,40			1,75			
			CO ₂ tons	0,95			1,18			
External diameters	Indoor unit	Water (System)	inch	1"						
		Water (DHW)	inch	1/2"						
		Outdoor unit	Water (System)	inch	1"	1" 1/4				

HQCN-NEE 1 MC A

Indoor unit (ODU)



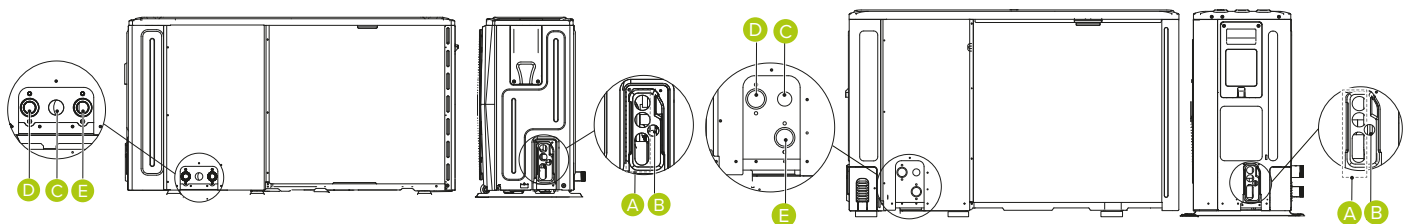
WiSAN-YME 1 S
Outdoor unit (ODU)

Size - Set				6.1	7.1	8.1	
Heating	Capacity	Water 35/30°C	Nominal / Maximum kW	12,1 / 14,6	14,5 / 15,5	15,9 / 16,8	
	COP	Outdoor air 7°C	Nominal	4,95	4,60	4,50	
	Capacity	Water 35/30°C	Nominal / Maximum kW	10,0 / 11,0	12,0 / 12,7	13,1 / 13,9	
	COP	Outdoor air -7°C	Nominal	3,00	2,85	2,70	
	Capacity	Water 45/40°C	Nominal / Maximum kW	12,3 / 14,5	14,1 / 15,7	16,0 / 16,6	
	COP	Outdoor air 7°C	Nominal	3,70	3,60	3,50	
Cooling	Capacity	Water 18/23°C	Nominal / Maximum kW	12,0 / 15,0	13,5 / 15,3	14,2 / 16,4	
	EER	Outdoor air 35°C	Nominal	3,95	3,61	3,61	
	Capacity	Water 7/12°C	Nominal / Maximum kW	11,5 / 11,5	12,4 / 12,4	14,0 / 14,0	
	EER	Outdoor air 35°C	Nominal	2,75	2,50	2,50	
DHW	Net tank capacity		l	50	50		
Electrical power for meter sizing			kW	5,50	5,80	6,20	
Seasonal efficiency	Heating	Energy class	-	A++	A++	A++	
		Annual energy consumption	-	6.916	6.917	7.213	
		Water 55°C SCOP	-	3,45	3,47	3,41	
	Medium climate	Heating	Energy class	-	A+++	A+++	A+++
			Annual energy consumption	-	5.156	5.157	6.011
			Water 35°C SCOP	-	4,81	4,72	4,62
		ηs (seasonal output)	%	135	135	133	
		ηs (seasonal output)	%	189	186	182	
Size - Indoor unit				TO			
Power supply	Voltage/Frequency/Phases		V/Hz/n°	220-240/50/1			
System expansion tank capacity			l	8			
DHW expansion tank capacity			l	3			
Sound power			Nominal dB(A)	41			
Sound pressure @1m			Nominal dB(A)	26			
Size - Outdoor unit				6.1	7.1	8.1	
Power supply	Voltage/Frequency/Phases		V/Hz/n°	380-415/50/3+N			
Water flow-rate	Water 35/30°C	Nominal	l/s	0,58	0,69	0,76	
Pump available pressure	Outdoor air 7°C	Nominal	kPa	60	48	40	
Expansion tank capacity			l	4,8			
Minimum system water content			l	70			
Sound power			Minimum / Nominal dB(A)	59 / 65	59 / 65	59 / 68	
Sound pressure @1m			Minimum / Nominal dB(A)	44 / 50	44 / 50	44 / 53	
Operating range							
Water supply temperature	Heating / DHW	Full electric	Minimum / Maximum °C	25 / 65			
		Hybrid	Minimum / Maximum °C	25 / 75			
Operating range (Outdoor air)	Cooling	-	Minimum / Maximum °C	5 / 25			
		-	Minimum / Maximum °C	-25 / 35			
Operating range (Outdoor air)	DHW	-	Minimum / Maximum °C	-25 / 43			
		-	Minimum / Maximum °C	-5 / 43			

Size				6.1	7.1	8.1
Dimensions	Indoor unit	AxCxB	mm	450 x 1100 x 550		
	Outdoor unit	AxCxB	mm	1.385x864x445		
Operating weight	Indoor unit		kg	140		
	Outdoor unit		kg	144		
Refrigerant charge ¹			type / GWP	R-32 / 675		
			kg	1,75		
			CO ₂ tons	1,18		
External diameters	Indoor unit	Water (System)	inch	1"		
		Water (DHW)	inch	1/2"		
	Outdoor unit	Water (System)	inch	1" 1/4		

SIZES 2.1 to 3.1

SIZES 4.1 to 8.1



- A. Hole for high voltage cable (power supply)
 B. Hole for low pressure cable (control and signal cables)

- C. Hole for discharge pipe
 D. Water outlet
 E. Water inlet

technical data - EASYMINI + Edge F

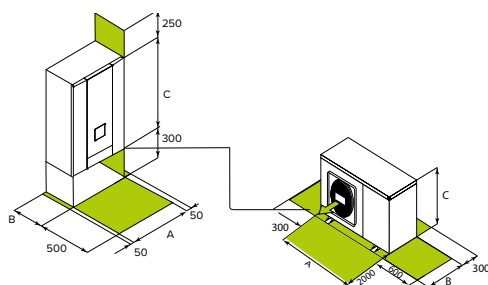
Size - Set				2.1	3.1	4.1	5.1	6.1	7.1	8.1	
Heating	Capacity	Water 35/30°C	Nominal / Maximum	kW	4,50 / 6,86	6,20 / 7,70	8,40 / 10,4	10,0 / 11,0	12,0 / 14,7	14,0 / 16,0	15,0 / 17,6
	COP	Outdoor air 7°C	Nominal	-	5,15	4,90	5,00	4,70	4,80	4,50	4,40
	Capacity	Water 35/30°C	Nominal / Maximum	kW	4,50 / 5,56	5,90 / 6,18	7,00 / 8,74	8,00 / 8,89	10,0 / 11,1	11,0 / 12,1	11,5 / 13,2
	COP	Outdoor air -7°C	Nominal	-	3,10	2,95	3,00	2,85	2,80	2,75	2,70
	Capacity	Water 45/40°C	Nominal / Maximum	kW	4,50 / 6,55	6,40 / 7,35	8,20 / 9,57	10,0 / 10,5	12,0 / 14,1	14,0 / 15,3	15,0 / 16,9
	COP	Outdoor air 7°C	Nominal	-	4,05	3,80	3,85	3,65	3,70	3,50	3,35
Cooling	Capacity	Water 18/23°C	Nominal / Maximum	kW	4,90 / 7,84	5,90 / 9,75	6,80 / 11,4	7,80 / 12,13	12,0 / 16,4	13,0 / 17,3	14,4 / 18,6
	EER	Outdoor air 35°C	Nominal	-	5,50	5,10	5,15	4,75	4,50	4,20	3,90
	Capacity	Water 7/12°C	Nominal / Maximum	kW	4,70 / 5,66	6,80 / 7,14	7,50 / 8,19	8,76 / 8,76	11,5 / 12,0	12,7 / 12,7	14,0 / 14,3
	EER	Outdoor air 35°C	Nominal	-	3,65	3,10	3,45	3,01	3,05	2,90	2,75
DHW	Net tank capacity			l			50				
Electrical power for meter sizing				kW	2,70	3,00	3,60	3,90	5,70	6,00	6,40
Seasonal efficiency Medium climate	Heating		Energy class	-	A++	A++	A++	A++	A++	A++	A++
	Water 55°C		Annual energy consumption	-	2.684	3.164	3.676	4.215	6.847	7.414	8.349
			SCOP	-	3,79	3,81	3,81	3,82	3,62	3,62	3,57
			ηs (seasonal output)	%	148	150	150	150	142	142	140
	Cooling		Energy class	-	A+++	A+++	A+++	A+++	A+++	A+++	A+++
	Water 35°C		Annual energy consumption	-	2.040	2.692	3.187	3.734	5.376	6.091	6.630
		SCOP	-	5,09	4,91	5,20	5,07	4,68	4,64	4,59	
		ηs (seasonal output)	%	201	194	205	200	184	182	181	
Size - Indoor unit				TO							
Power supply		Voltage/Frequency/Phases		V/Hz/n°	230/50/1						
System expansion tank capacity				l	8						
DHW expansion tank capacity				l	3						
Sound power		Nominal		dB(A)	41						
Sound pressure @1m		Nominal		dB(A)	26						
Size - Outdoor unit				2.1	3.1	4.1	5.1	6.1	7.1	8.1	
Power supply		Voltage/Frequency/Phases		V/Hz/n°	230/50/1						
Water flow-rate		Water 35/30°C	Nominal	l/s	0,21	0,30	0,40	0,48	0,57	0,67	0,71
Pump available pressure		Outdoor air 7°C	Nominal	kPa	89	87	80	71	63	54	49
Expansion tank capacity				l	8						
Minimum system water content				l	30			70			
Sound power		Minimum / Nominal		dB(A)	51 / 56	53 / 58	55 / 60	56 / 61	58 / 65	59 / 65	60 / 69
Sound pressure @1m		Minimum / Nominal		dB(A)	40 / 44	42 / 46	42 / 48	43 / 49	43 / 51	44 / 52	48 / 56
Operating range											
Water supply temperature	Heating / DHW	Full electric	Minimum / Maximum	°C	25 / 75						
		Hybrid	Minimum / Maximum	°C	25 / 75						
	Cooling	-	Minimum / Maximum	°C	5 / 25						
Operating range (Outdoor air)	Heating	-	Minimum / Maximum	°C	-25 / 35						
		DHW	-	Minimum / Maximum	°C	-25 / 43					
	Cooling	-	Minimum / Maximum	°C	-5 / 43						

dimensions and connections

Size				2.1	3.1	4.1	5.1	6.1	7.1	8.1
Dimensions	Indoor unit	AxCxB	mm	450 x 1100 x 550						
	Outdoor unit	AxCxB	mm	1.295x718x386			1.385x865x423			
Operating weight	Indoor unit		kg	140						
	Outdoor unit		kg	90		117		135		
Refrigerant charge			type / GWP	R-290 / 3						
			kg	0,70		1,10		1,25		
			CO ₂ tons	0,002		0,003		0,004		
External diameters	Indoor unit	Water (System)	inch	1"						
		Water (DHW)	inch	1/2"						
	Outdoor unit	Water (System)	inch	1"		1" 1/4				

HQCN-NEE 1 MC A

Indoor unit (ODU)



WiSAN-PME 1 S

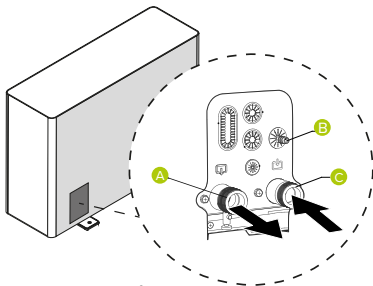
Outdoor unit (ODU)

For trouble-free operation of the unit it is essential to maintain the safety distances indicated by the green areas.

Size - Set				6.1	7.1	8.1		
Heating	Capacity	Water 35/30°C	Nominal / Maximum	kW	12,0 / 14,7	14,0 / 16,0	15,0 / 17,6	
	COP	Outdoor air 7°C	Nominal	-	4,80	4,50	4,40	
	Capacity	Water 35/30°C	Nominal / Maximum	kW	10,0 / 11,1	11,0 / 12,1	11,5 / 13,2	
	COP	Outdoor air -7°C	Nominal	-	2,80	2,75	2,70	
	Capacity	Water 45/40°C	Nominal / Maximum	kW	12,0 / 14,1	14,0 / 15,3	15,0 / 16,9	
	COP	Outdoor air 7°C	Nominal	-	3,70	3,50	3,35	
Cooling	Capacity	Water 18/23°C	Nominal / Maximum	kW	12,0 / 16,4	13,0 / 17,3	14,4 / 18,6	
	EER	Outdoor air 35°C	Nominal	-	4,50	4,20	3,90	
	Capacity	Water 7/12°C	Nominal / Maximum	kW	11,5 / 12,0	12,7 / 12,7	14,0 / 14,3	
	EER	Outdoor air 35°C	Nominal	-	3,05	2,90	2,75	
DHW	Net tank capacity			l	50			
Electrical power for meter sizing				kW	5,70	6,00	6,40	
Seasonal efficiency Medium climate	Heating Water 55°C	Energy class	-	-	A++	A++	A++	
		Annual energy consumption	-	-	6.847	7.414	8.349	
		SCOP	-	-	3,62	3,62	3,57	
	Cooling	ηs (seasonal output)	%	-	-	142	140	
		Energy class	-	-	-	A+++	A+++	A+++
		Annual energy consumption	-	-	-	5.376	6.091	6.630
Heating Water 35°C	SCOP	-	-	-	4,68	4,64	4,59	
	ηs (seasonal output)	%	-	-	184	182	181	
	Size - Indoor unit				TO			
Power supply	Voltage/Frequency/Phases		V/Hz/n°	220-240/50/1				
System expansion tank capacity			l	8				
DHW expansion tank capacity			l	3				
Sound power			Nominal	dB(A)				
Sound pressure @1m			Nominal	dB(A)				
Size - Outdoor unit				6.1	7.1	8.1		
Power supply	Voltage/Frequency/Phases		V/Hz/n°	380-415/50/3+N				
Water flow-rate	Water 35/30°C	Nominal	l/s	0,57	0,67	0,71		
Pump available pressure	Outdoor air 7°C	Nominal	kPa	63	54	49		
Minimum system water content			l	70				
Expansion tank capacity			l	8 (Odu)				
Sound power			Minimum / Nominal	dB(A)				
Sound pressure @1m			Minimum / Nominal	dB(A)				
Operating range								
Water supply temperature	Heating / DHW	Full electric	Minimum / Maximum	°C				
		Hybrid	Minimum / Maximum	°C				
Operating range (Outdoor air)	Cooling	-	Minimum / Maximum	°C				
		-	Minimum / Maximum	°C				
Operating range (Outdoor air)	DHW	-	Minimum / Maximum	°C				
		-	Minimum / Maximum	°C				
Operating range (Outdoor air)	Cooling	-	Minimum / Maximum	°C				
		-	Minimum / Maximum	°C				

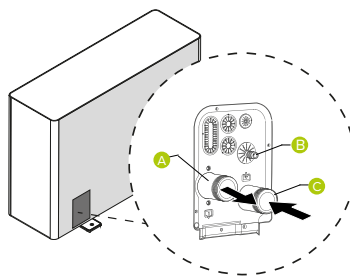
Size				6.1	7.1	8.1
Dimensions	Indoor unit	AxCxB	mm			
	Outdoor unit	AxCxB	mm	1.385x865x423		
Operating weight	Indoor unit		kg	140		
	Outdoor unit		kg	135		
Refrigerant charge			type / GWP	R-290 / 3		
			kg	1,25		
			CO ₂ tons	0,004		
Equivalent pipe length with pre-charging only				m		
External diameters	Indoor unit	Water (System)	inch	1"		
		Water (DHW)	inch	1/2"		
	Outdoor unit	Water (System)	inch	1" 1/4		

SIZES 2.1 to 3.1



- A. 1" system supply
- B. Safety valve Ø 16 mm
- C. 1" system return

SIZES 4.1 to 8.1



- A. 1 1/4" system supply
- B. Safety valve Ø 16 mm
- C. 1 1/4" system return