

RASTER GRL

Raster grille for extract air/transfer air designed for square suspended ceiling systems



QUICK FACTS

- Used in square ceiling system
- Standard finish white RAL 9003/NCS S 0500-N
- Can be placed directly in the T15//T24 Lay in suspended ceiling system
- Designed for installation in Swegon's ADAPTER for suspended ceiling systems.

AIR FLOW – SOUND LEVEL		
Size (mm)	l/s (m ³ /h)	
	5 Pa, 20 dB(A)	10 Pa, 25 dB(A)
395x395	340 (1220)	450 (1620)
495x495	520 (1875)	720 (2600)
595x595	800 (2880)	900 (3240)
1195x595	1500 (5400)	2000 (7200)

NOTE! max. velocity over the front area = 2 m/s

Technical description

Design

Square raster grille for extract air or transfer air. Designed for installation in a suspended ceiling system. Can be installed in Swegon's ADAPTER for suspended ceiling systems.

Materials and surface treatment

The grille is made of aluminium. Finished in standard white, RAL 9003/NCS S 0500-N.

The air diffuser is also available in an unpainted finish or in optional standard colours: matt grey RAL 7037, white aluminium RAL 9006, jet black RAL 9005, grey aluminium RAL 9007 and white RAL 9010.

Commissioning

A flow measuring damper installed in the duct system is recommended for commissioning and air flow measurements.

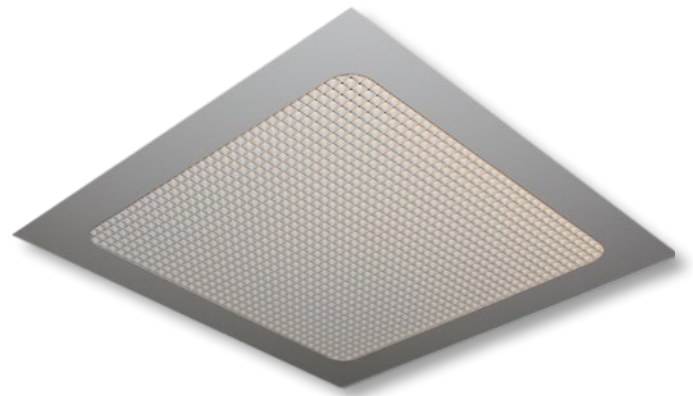
Maintenance

Clean the grille if needed with lukewarm water and dishwashing detergent added. Alternatively, use a vacuum cleaner with a brush nozzle when cleaning. The ducting system is accessed easily by lifting the grille from the suspended ceiling system/ADAPTER.

Environment

The Building Materials Declaration is available from www.swegon.com.

Installation



Engineering graph

- The graph must not be used for commissioning
- The dB(A) values are for rooms with normal acoustic absorption of 4 dB.
- The dB(C) value lies normally 6-9 dB above the dB(A) value.

Extract air - Raster grille

Air flow - Pressure drop - Sound level

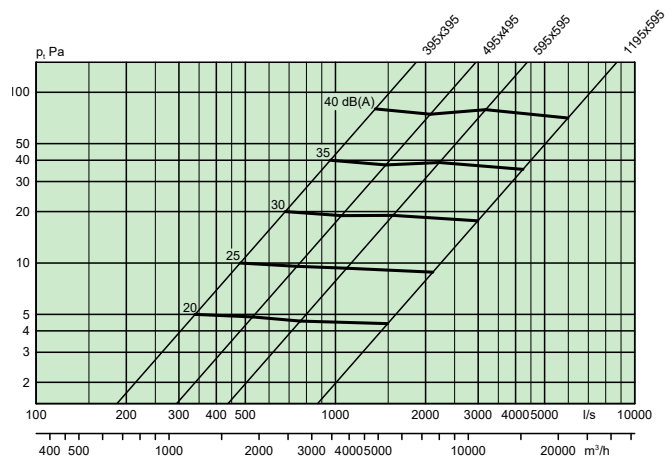


Figure 1. Raster installation.



Figure 2. Raster installation in ADAPTER.

Dimensions and weights table

Size AxB (mm)	Weight (kg)
395x395	0.38
495x495	0.60
595x595	0.85
1195x595	1,79

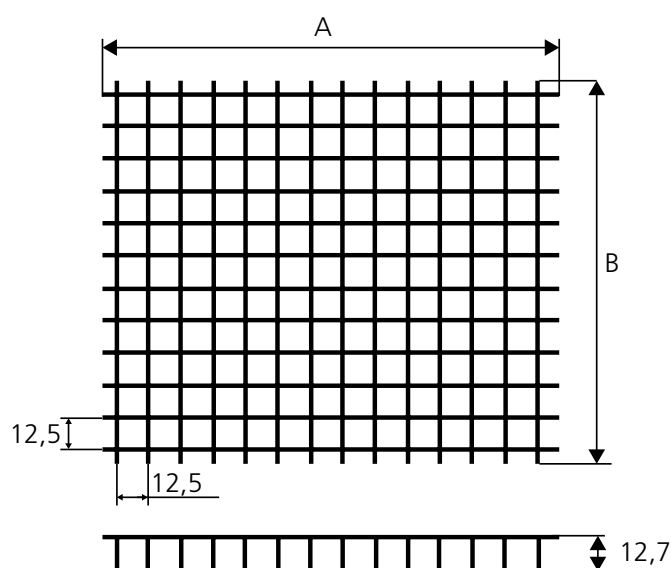


Figure 3. Dimensions raster grille.

Specification

Product

Square raster grille for extract air/transfer air

RASTER GRL aaa x bbb

Dimensions, (mm) 395x395, 495x495, 595x595, 1195x595

Specification text

Example of a specification text conforming to VVS AMA Standard. (only in Swedish).

FD/ÖD

Swegon's square grille RASTER GRL for suspended ceiling systems.

- Fixed horizontal and vertical aluminium vanes
- Powder-painted and baked white finish, RAL 9003/NCS S 0500-N