

Ceiling heating system for warehouses and factories



HEATSTRIPS

- Heat strips are a ceiling heating system that remain effective in high ceilings.
- You can limit heating to areas where people are, thus cutting overall heating costs.
- They can be combined with any ventilation system. Specially good with diffuse incoming air.

FUNCTION

- Heat radiating.

USE

- Large halls
- Industrial buildings
- Sports centres
- Spot heating



KEY FIGURES

Heating power:	Up to 400 W/m
Size:	3 widths, any length in intervals of 500 mm.
Bredd:	615 och 900 mm
Colour:	Grey undercoat NCS 5502R
Control:	By room or centrally. Swegon Control system, see separate brochure.

SPECIAL FEATURES OF KVS

- KVS heat strips work by exchanging heat between fixed bodies. That means that in a room with a high ceiling, the place where people are is heated while the intervening air remains unaffected. This is more economic compared with hot-air heating.
- Placing the strips in the ceiling frees up space below for fixed or portable production equipment, for example.
- Thanks to its systematic construction and specially adapted accessories, the KVS system can be assembled simply and quickly.
- No maintenance is required because of the robust design and the fact that there are no moving parts.
- Because ventilation and heating are quite separate, the ventilation system can be constructed exclusively for the activity taking place in the building. The main ventilation can be diffuse incoming air. In this way, heating and ventilation will be directed to where they are needed - the place where the people are.
- For spot heating in otherwise cold spaces, KVS is an extremely economic solution.

FUNCTION

Hot water circulates through the pipes and heat is led to the underside of the strip. Because the strip planting has a higher temperature than the room's surfaces, heat is given out.

CONSTRUCTION

KVS has a very robust construction and is made from strong aluminium sheeting.

The folded down edges form an effective convection guard. The heating pipes are made of 38/35 mm steel which are secured to the strip plating with cross bars. Because of the tight partitions there is a secure fit between pipe and strip. Pin-bolts are welded into the cross bars to provide attachment when installing. The upper side is insulated with aluminium foil mineral wool.

The fittings are made from surface-treated steel.

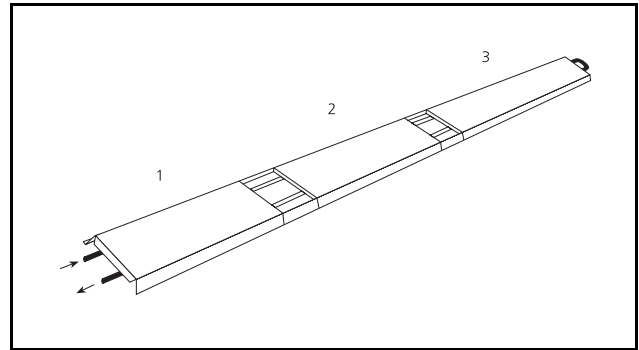


Figure 1. Series connection.

1 = Connection panel

2 = Middle panel

3 = End panel

The heat strips are made in complete sections which can be up to 6 metres long. By combining various section lengths, all lengths at 500 mm intervals can be supplied.

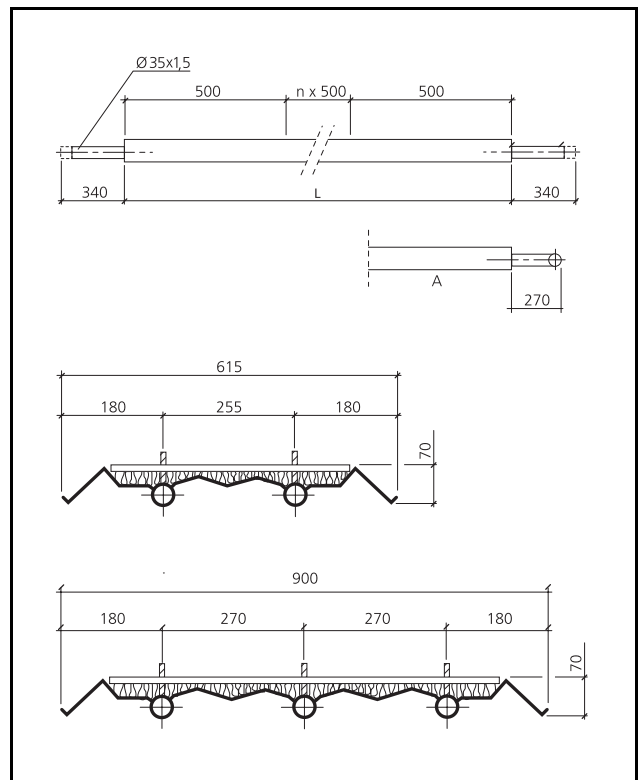


Figure 2. Dimensions KVS.

A = Typ 2-P, 3-P

Table 1. Weight per metre

Size	Weight (kg/m)
2 pipe	4,5
3 pipe	7,5

SPECIAL TYPES

Colour: Can be supplied in optional colour on request.

Connection variants: If other connection options are required please state KVS size-X and supply a drawing.

ACCESSORIES

Join plate SP

A covering plate between joining panels, for assembly on site.

Assembly kit M3S

For fittings higher than 500 mm.

Ask for: M3S + fitting height

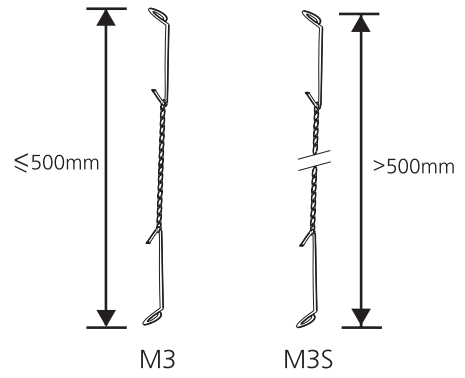


Figure 4. Assembly kit M3 and M3S.

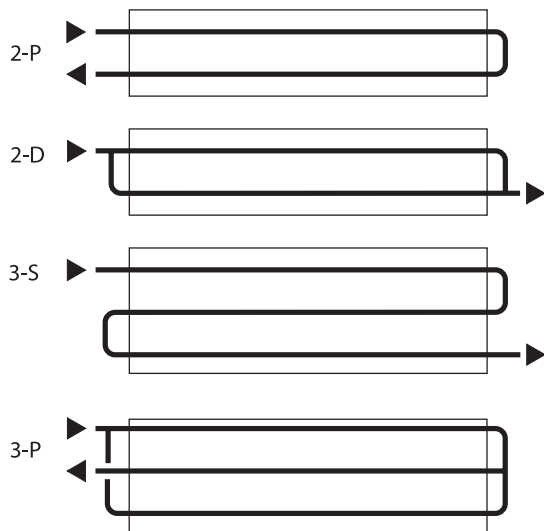


Figure 3. Connection variants

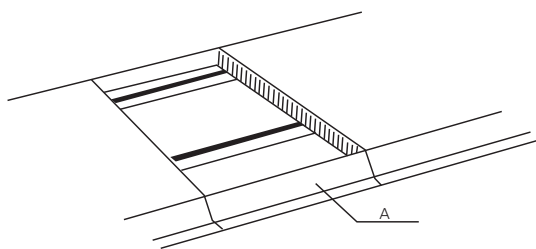


Figure 4. Join plate SP